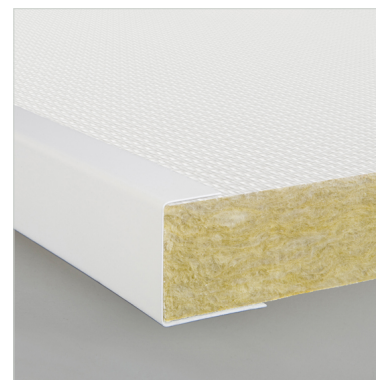


PARAFON Wall Panel



Certification Number

0809-CPR-1013 / Eurofins Expert
 Services Ltd, P.O. Box 1001, FI-
 02044 VTT, Finland

Short Description

PARAFON Wall Panels are sound-
 absorbing and impact-resistant wall
 panels for installing directly on walls.
 The surface is covered with the
 strong glass-fibre fabric Slugger,
 which is dirt-repelling and easy to
 clean. Available in white, grey and
 black and can be used as a notice
 board.

Usage Conditions

May be used continuously in 95 %
 relative humidity at a temperature of
 30 °C, occasionally also at 100 % and
 40 °C.

Dimensions

Dimensions		
Thickness	Width x Length	Weight
Edge A:		
40 mm	1200 x 2700 mm	4,0 kg/m ²

Packaging

Package Type: Carton

Fire Properties

Reaction to Fire		
Property	Value	According to
Reaction to Fire, Euroclass	A2 - s1, d0	EN 13964:2014 (EN 13501-1)

Other Fire Properties		
Property	Value	According to
Combustibility	Base product non-combustible	EN ISO 1182

Sound Properties

Acoustic Absorption Index		
Property	Value	According to
Sound Absorption α_w , Direct Fixing	0,95	EN 13964:2014 (EN ISO 354 / EN ISO 11654)

Property	Value	According to
Practical Sound Absorption Class	A	EN 13964:2014 (EN ISO 354 / EN ISO 11654)

Mechanical Properties

Tensile/Flexural Strength		
Property	Value	According to
Flexural Tensile Strength	NPD	EN 13964:2014

Other Mechanical Properties		
Property	Value	According to
Shatter Properties	NPD	EN 13964:2014

Emissions

Property	Value	According to
Emission Indoor Climate	M1	Finnish Classification

Release of Dangerous Substances to the Indoor Environment		
Property	Value	According to
Release of Formaldehyde	E1	EN 13964:2014
Release of Asbestos	No content of asbestos	EN 13964:2014

Durability

Durability of Reaction to Fire Against Heat, Weathering, The fire performance of mineral wool does not deteriorate with time. The Ageing/Degradation Euroclass classification of product is related to the organic content, which cannot increase with time.

Facings

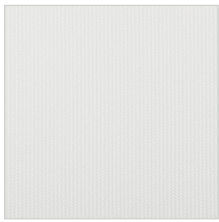
Facing Material High quality glass fiber woven surface layer. White, grey and black color options. Backside: thin glass fiber tissue.

Gloss Factor White: 3, Grey: 3, Black:1

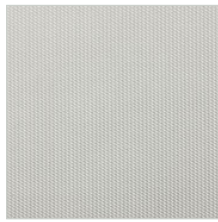
Light Reflectance White: 83 %, Grey: 48 %, Black: 5 %

Edges

Treatment of Edges Unpainted



White, NCS S 0502-R50B



Grey, NCS S 2502-G



Black, NCS S 9000-N

Installation

Can be ordered with white vertical edge profiles attached and then be mounted with top and bottom profiles. Or be installed with hat profiles.

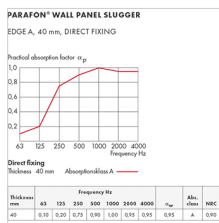
Maintenance

Using a soft brush, by vacuum cleaning or by wiping with a damp cloth or sponge.

Disposal and Recycling

May be used as thermal insulation or taken to a dump. No restrictions.

Sound Absorption Curves



Head Office: PAROC GROUP, P.O. Box 240 (Energiakuja 3), FI-00181 Helsinki Finland, Tel. +358 46 876 8000, www.paroc.com

The information in this brochure describes the conditions and technical properties of the disclosed products, valid at the time of publication of this document and until replaced by the next printed or digital version. The latest version of this brochure is always available on the Paroc website. Our information material presents applications for which the functions and technical properties of our products have been approved. However, the information does not mean a commercial guarantee. We do not assume liability of the use of third party components used in the application or the installation of our products. We cannot warrant the suitability of our products if used in an area or conditions which are not provided in our information material. As a result of constant further development of our products we reserve the right to make alterations to our information material at any time. PAROC is a registered trademark of Paroc Group. This data sheet is valid in following countries: international use (general information).